

NEW MEMBER

Galician Wood and Design Cluster (CMD)

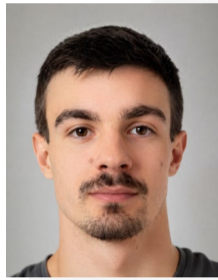
COUNTRY: Spain



REPRESENTATIVES:



Susana Vázquez
Head of Administration



Luis Suárez
Project Manager



Laura Rodríguez
Head of Communication



Ricardo González
Cluster Manager

ACTIVITIES & MESSAGE TO MEMBERS

- The CMD was founded in 2001 as a companies' initiative linked to the wood sector together with the Wood Technology Centre (CIS Madeira) and the University of Vigo.
- The CMD has brought together companies and agents linked to the timber value chain, including companies related to forestry industries, sawmills, veneer and board companies, paper pulp, paper, carpentry and furniture companies, the Contract channel, service companies, technology centers, prescriber, engineering and universities.
- The turnover of CMD companies with a production center in Galicia amounted to 2,093 million euros, which represents 90% of the sector's turnover.



- More than 12,500 actions contributed to obtain the Gold Label of Cluster Management Excellence in 2014, according to ESCA (European Secretariat for Cluster Analysis).
- At the beginning of 2023, the CMD was recognized as an official partner of the New European Bauhaus.

LINKS & DOCUMENTS

<https://www.clustermadeira.com>

<https://www.linkedin.com/company/cluster-da-madeira-e-o-dese%C3%B1o-de-galiciacmd>

CONNECT
SHARE
INFLUENCE